

NT - Indigenous Ranger Groups

- 1 Anangu Luritjiku Rangers
- 2 Anmatyerr Rangers
- 3 Muru-warinyi Ankkul Rangers
- 4 Tjuwanpa Rangers
- 5 Tjuwanpa Women Rangers
- 6 Kaltukatjara Rangers
- 7 Warlpiri Rangers
- 8 North Tanami Rangers
- 9 Bulgul Land and Sea Rangers
- 10 Malak Malak Land and Water Management Rangers
- 11 Wagiman Rangers
- 12 Thamarrurr Rangers
- 13 Waanyi Garawa Rangers
- 14 Garawa Rangers
- 15 Li-Anthawirriyarra Sea Rangers
- 16 Tiwi Rangers
- 17 Anindilyakwa Rangers
- 18 Warnbi Rangers
- 19 Werenbun Rangers
- 20 Crocodile Islands Rangers
- 21 Yirralka Rangers
- 22 Dhimurru Rangers
- 23 Bawinanga Rangers
- 24 Warddeken Rangers
- 25 Gargi Land and Sea Management Rangers
- 26 Gumurr Marthakal Rangers
- 27 Yugul Mangi Land and Sea Management Rangers
- 28 Arafura Swamp Ranger Groups
- 29 Mardbalk Land and Sea Management Rangers
- 30 Mimal Rangers
- 31 Numbulwar Numburindi Land and Sea Management Rangers
- 32 Jawoyn Rangers
- 33 Njanjma Rangers
- 34 Mangarrayi Rangers
- 35 Tjakura Rangers
- 36 Asyrikarrak Kirim Rangers

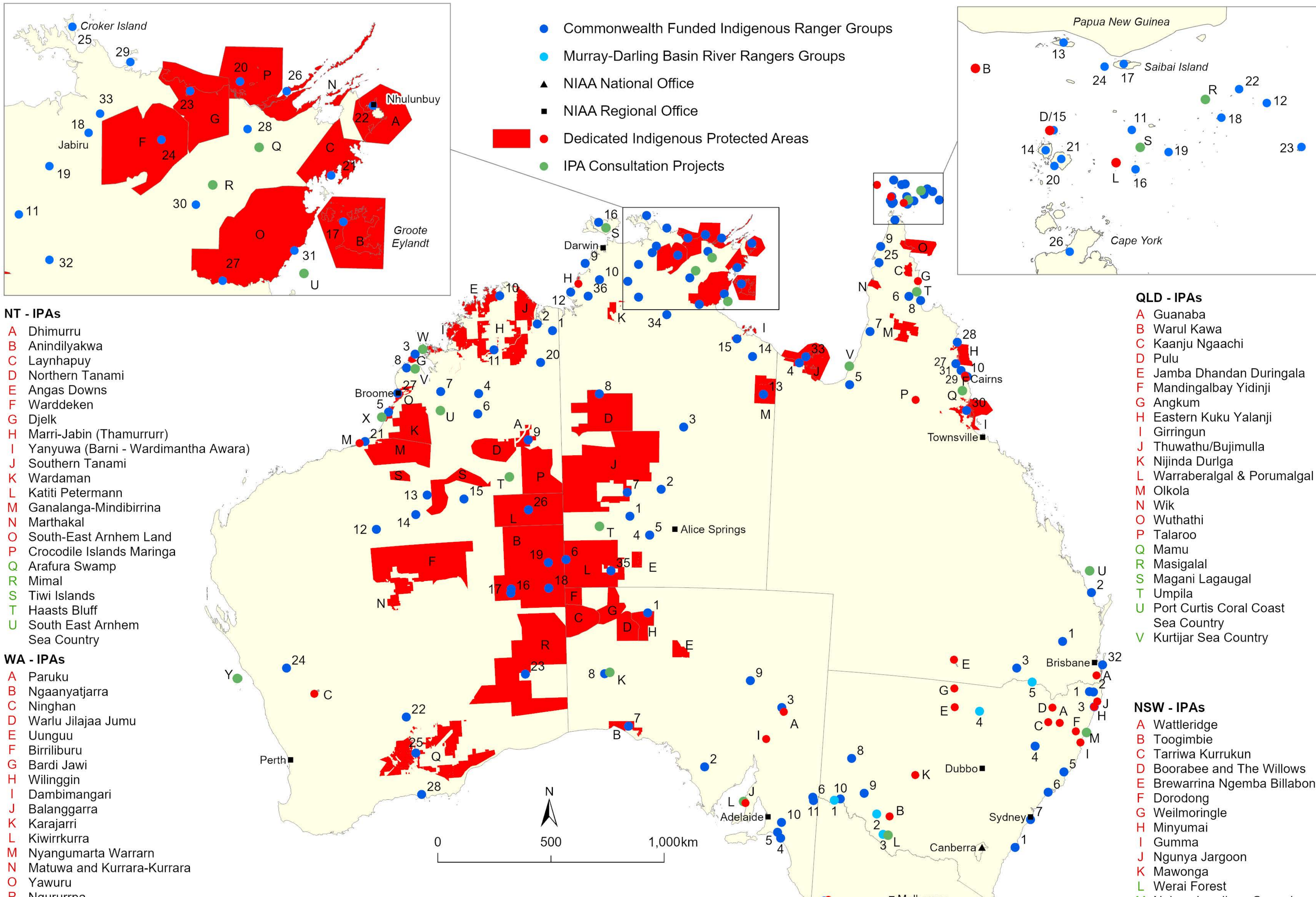
WA - Indigenous Ranger Groups

- 1 Yawoorroong Miriuwung Gajerrong Rangers
- 2 Balangarra Rangers
- 3 Bardi Jawi Rangers
- 4 Gooniyandi Rangers
- 5 Karajarri Rangers
- 6 Yanunijarra Ngurrara Rangers
- 7 Nyikina Mangala Rangers
- 8 Nyul Nyul Rangers
- 9 Paruku Rangers
- 10 Unguu Rangers
- 11 Wunggurr Rangers
- 12 Jigalong Rangers
- 13 Punmu Rangers
- 14 Parngurr Rangers
- 15 Kunawarritji Rangers
- 16 Warburton Women Rangers
- 17 Warburton Men Rangers
- 18 Blackstone Rangers
- 19 Warakurna Rangers
- 20 Kija Rangers
- 21 Nyangumarta Rangers
- 22 Goldfields Land Management Rangers
- 23 Spinifex Rangers
- 24 Mid West Aboriginal Rangers (3 groups)
- 25 Ngadju Rangers
- 26 Kiwirrkurra Rangers
- 27 Yawuru Rangers
- 28 Tjaltjiraak Rangers

SA - Indigenous Ranger Groups

- 1 APY Land Management Rangers
- 2 Gawler Ranges Rangers
- 3 Nantawarrina Rangers
- 4 Ngarrindjeri Rangers
- 5 Raukkan Rangers
- 6 Australian Landscapes Trust Ranger Team
- 7 Yalata Rangers
- 8 Oak Valley Rangers
- 9 Arabana Rangers
- 10 Coorong and Murray Lower Lakes Area Rangers
- 11 River Murray and Mallee Aboriginal Corporation Ranger Team

Indigenous Protected Areas - Commonwealth Funded Indigenous Ranger Programs - March 2024



NT - IPAs

- A Dhimurru
- B Anindilyakwa
- C Laynhapuy
- D Northern Tanami
- E Angas Downs
- F Warddeken
- G Djelk
- H Marri-Jabin (Thamurrurr)
- I Yanyuwa (Barni - Wardimantha Awara)
- J Southern Tanami
- K Wardaman
- L Katiti Petermann
- M Ganalanga-Mindibirrina
- N Marthakal
- O South-East Arnhem Land
- P Crocodile Islands Maringa
- Q Arafura Swamp
- R Mimal
- S Tiwi Islands
- T Haasts Bluff
- U South East Arnhem Sea Country

WA - IPAs

- A Paruku
- B Ngaanyatjarra
- C Ninghan
- D Warlu Jilajaa Jumu
- E Unguu
- F Birriliburu
- G Bardi Jawi
- H Wilinggin
- I Dambimangari
- J Balangarra
- K Karajarri
- L Kiwirrkurra
- M Nyangumarta Warram
- N Matuwa and Kurrara-Kurrara
- O Yawuru
- P Ngurrurpa
- Q Ngadju
- R Anangu Tjutaku
- S Martu
- T Ngurra Kayanta
- U Nyikina Mangala
- V Nyul Nyul
- W Mayala
- X Tujukana pa Karajarri Kura Jurrar Sea Country
- Y Yamatji Sea Country

SA - IPAs

- A Nantawarrina
- B Yalata
- C Watarru
- D Walalkara
- E Mount Willoughby
- F Kalka - Pipalyatjara
- G Apara - Makiri - Punt
- H Antara - Sandy Bore
- I Yappala
- J Wardang Island
- K Maralinga Tjarutja Lands
- L Wardang Island Sea Country

VIC - IPAs

- A Lake Condah
- B Kurtonitj
- C Tyrendarra
- D Deen Maar
- E Framlingham Forest
- F Gunditjmarra Sea Country
- G Nanjit to Mallacoota Sea Country

VIC - Indigenous Ranger Groups

- 1 Budj Bim Rangers

TAS - Indigenous Ranger Groups

- 1 milythina pakana Rangers (incl. 1a & 1b)
- 2 Tasmania PWS Trainees
- 3 truwana Rangers

ACT/Jervis Bay Territory - Indigenous Ranger Groups

- 1 Bherwerre Rangers

TAS - IPAs

- A Preminghana
- B Risdon Cove
- C Putalina
- D Mount Chappell Island
- E Badger Island
- F Babel Island
- G Great Dog Island
- H lungatalanana
- I tayaritja Sea Country



QLD - Indigenous Ranger Groups

- 1 Bunya Mountains Murri Rangers
- 2 Gidarjil Land and Sea Rangers (2 groups)
- 3 Queensland Murray Darling Rangers
- 4 Gangalidda Garawa (Burketown) Rangers
- 5 Kurtijar, Gkuthaarn, and Kukatj (Normanton) Rangers
- 6 Kalan Rangers
- 7 Kowanyama Indigenous Rangers
- 8 Lama Lama Rangers
- 9 Mapoon Land and Sea Rangers
- 10 Mandingalbay Yidinji Rangers
- 11 lamalgal Rangers
- 12 Erubam Rangers
- 13 Malu Kiai Rangers
- 14 Mura Badhugal Rangers
- 15 Mabyugiw Rangers
- 16 Warraberalgal Rangers
- 17 Mura Buway Rangers
- 18 Masigalgal Rangers
- 19 Porumalgal Rangers
- 20 Mua Lagalgau Rangers - Kubin
- 21 Mua Lagalgau Rangers - St Pauls
- 22 Ugaram Rangers
- 23 Meriam Gesep Rangers
- 24 Simakal Rangers
- 25 Nanum Wungthim Rangers
- 26 Apudthama Land and Sea Rangers
- 27 Eastern Kuku Yalanji Indigenous Rangers
- 28 Yuku-Baja-Muliku Indigenous Rangers
- 29 Gunggandji Rangers
- 30 Giringun Rangers
- 31 Yirrganydji Indigenous Land and Sea Rangers
- 32 Quandamooka Rangers
- 33 Wellesley Islands Rangers

QLD - IPAs

- A Guanaba
- B Warul Kawa
- C Kaanju Ngaachi
- D Pulu
- E Jamba Dhandan Duringala
- F Mandingalbay Yidinji
- G Angkum
- H Eastern Kuku Yalanji
- I Giringun
- J Thuwathu/Bujimulla
- K Nijinda Durlga
- L Warraberalgal & Porumalgal
- M Olkola
- N Wik
- O Wuthathi
- P Talaroo
- Q Mamu
- R Masigalal
- S Magani Lagaugal
- T Umpila
- U Port Curtis Coral Coast Sea Country
- V Kurtijar Sea Country

NSW - IPAs

- A Wattlebridge
- B Toogimbie
- C Tarriva Kurrukun
- D Boorabee and The Willows
- E Brewarrina Ngemba Billabong
- F Dorodong
- G Weilmoringle
- H Minyumai
- I Gumma
- J Ngunya Jargoan
- K Mawonga
- L Werai Forest
- M Ngiyambandigay Gaagal Sea Country

NSW - Indigenous Ranger Groups

- 1 Githabul Rangers
- 2 Ngulingah Aboriginal Rangers
- 3 Jahnala Yenbalehla Rangers
- 4 Walaaybaa Rangers
- 5 Mid North Coast Indigenous Rangers
- 6 Worimi Green Team Rangers
- 7 Gamay Rangers
- 8 Barkandji River Rangers
- 9 Willandra Lakes Region Indigenous Rangers
- 10 Barkindji Maraura Elders Environment Team

Data Sources: Indigenous Protected Areas, Indigenous Ranger Groups © Department of Climate Change, Energy, the Environment and Water and National Indigenous Australians Agency, Localities, State and Territory Borders © Commonwealth of Australia, Geoscience Australia.

Disclaimer: The views and opinions expressed in this publication are those of the authors and do not necessarily reflect those of the Australian Government.

While reasonable efforts have been made to ensure that the contents of this publication are factually correct, the Commonwealth does not accept responsibility for the accuracy or completeness of the contents, and shall not be liable for any loss or damage that may be occasioned directly or indirectly through the use of, or reliance on, the contents of this publication.

Map produced by: Environmental Data and Analysis Branch, Commonwealth of Australia, Department of Climate Change, Energy, the Environment and Water (DCCEEW).

Albers Equal Area projection on the GDA94 Datum, Date: 5/03/2024