

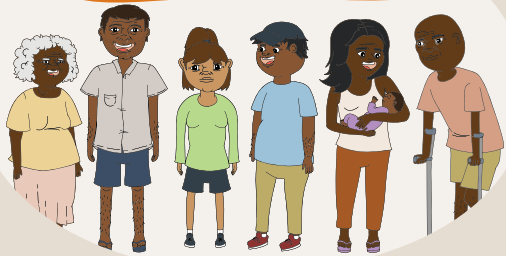


User journey: Remote employment service providers

FOR CONSULTATION ONLY

The remote employment service will complement the Remote Jobs and Economic Development Program by providing support for participants.

We want to contribute to a strong workforce



Providers support job seekers, and people who aren't able to work right now to build skills and contribute to their community by connecting them to the services they need to address barriers to employment.

We partner with government



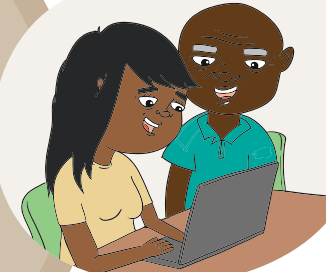
Providers work with NIAA to design and deliver employment services. They seek and apply for funding from the NIAA and other government agencies.

We support employers



Providers assist employers to train, mentor and retain their employees.

We help job seekers get job-ready



Providers support job seekers to get a tax file number, set up a superannuation account, fill out job applications and do training so that they are prepared for work. They negotiate flexible work arrangements with an employer based on a job seeker's needs.

Employees are supported and have pathways to progress

